



## 5 The Beehive

Seghill, Cramlington NE23 7FD

- Modern End Link House
  - 15ft Lounge
- Pleasant Rear Garden
  - Lovely Location
  - No Upper Chain
- Two Bedrooms
- Dining Kitchen
- Allocated Parking
- Open Views to Front
- Viewing is Recommended

**£159,950**





Pleasantly situated in the lovely village of Seghill, The Beehive presents an excellent opportunity for first-time buyers or those seeking a modern home with delightful open views. This end-terrace house is ready for you to move in.

Upon entering, you are welcomed into a Reception Hallway with access to ground floor cloaks/w.c. spacious living room that features an open staircase leading to the first floor. A pleasant dining kitchen, which boasts ample wall and floor units, providing plenty of storage, contrasting work surfaces incorporating stainless steel sink unit, gas hob, electric oven and extractor hood, space for table and chairs, double French doors open up to the rear garden, allowing for a lovely flow of natural light and easy access to outdoor living.

The property comprises two well-proportioned bedrooms. The bathroom features a modern white suite, including a panelled bath, low-level W.C., and washbasin.

Externally, the property benefits from a fenced rear garden, as well as an allocated parking space at the rear, adding to the convenience of this lovely home. With no upper chain, this property is an attractive proposition for those looking to settle in a popular area close to local amenities.

## Accommodation

### Entrance Hallway

### Living Room

15'2 x 14'10 inc staircase

### Dining Kitchen

15'10 x 7'5

### First Floor Landing

### Bedroom One

13'0 x 11'5

### Bedroom Two

11'2 x 7'9

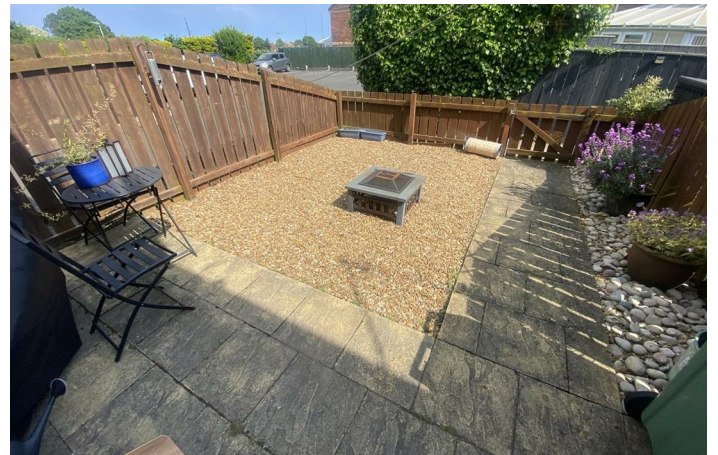
### Bathroom/w.c.

7'1 x 5'8

### Externally

### Disclaimer

ML Estates Ltd endeavour to maintain accurate descriptions of properties in Virtual Tours, Brochures, Floor Plans and descriptions, however, these are intended only as a guide and purchasers must satisfy themselves by personal inspection. All rooms have been measured with electronic laser and are approximate measurements only. None of the services to the above property have been tested by ourselves, and we cannot guarantee that the installations described in the details are in perfect working order. ML Estates for themselves, the vendors or lessors, produce these brochures in good faith and are a guideline only. They do not constitute any part of a contract and are correct to the best of our knowledge at the time of going to press. Pictures may appear distorted due to enlargement and are not to be used to give an accurate reflection of size. All negotiations and payments are subject to contract. The Tenure of the property should be clarified by your legal representative prior to exchange of contracts.





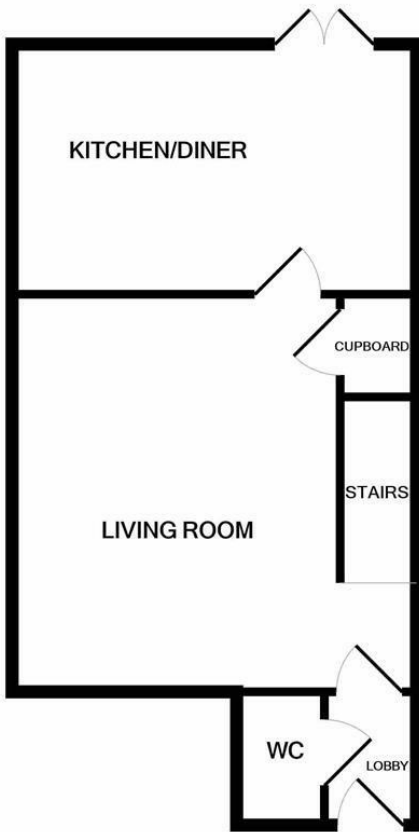


**Local Authority** Northumberland County Council  
**Council Tax Band** A  
**EPC Rating** C  
**Tenure** Freehold

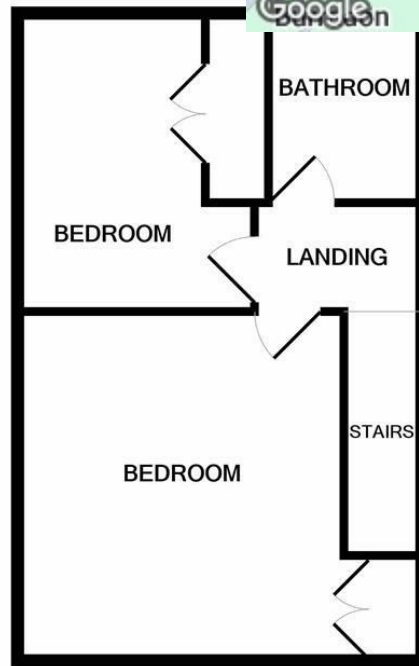


Energy Efficiency Rating		Current	Potential
Very energy efficient - lower running costs			
(92 plus) A			91
(81-91) B			
(69-80) C			
(55-68) D			
(39-54) E			
(21-38) F			
(1-20) G			
Not energy efficient - higher running costs			
England & Wales		EU Directive 2002/91/EC	

Environmental Impact (CO <sub>2</sub> ) Rating		Current	Potential
Very environmentally friendly - lower CO <sub>2</sub> emissions			
(92 plus) A			
(81-91) B			
(69-80) C			
(55-68) D			
(39-54) E			
(21-38) F			
(1-20) G			
Not environmentally friendly - higher CO <sub>2</sub> emissions			
England & Wales		EU Directive 2002/91/EC	



GROUND FLOOR  
 APPROX. FLOOR  
 AREA 400 SQ.FT.  
 (37.1 SQ.M.)



1ST FLOOR  
 APPROX. FLOOR  
 AREA 366 SQ.FT.  
 (34.0 SQ.M.)

TOTAL APPROX. FLOOR AREA 766 SQ.FT. (71.2 SQ.M.)

Whilst every attempt has been made to ensure the accuracy of the floor plan contained here, measurements of doors, windows, rooms and any other items are approximate and no responsibility is taken for any error, omission, or mis-statement. This plan is for illustrative purposes only and should be used as such by any prospective purchaser. The services, systems and appliances shown have not been tested and no guarantee as to their operability or efficiency can be given  
 Made with Metropix ©2020

**ML Estates Sales Office**

27 Avenue Road, Seaton Delaval, Tyne  
 And Wear, NE25 0DT

**Contact**

0191 237 60 60  
 sd@mlestates.co.uk  
 www.mlestates.co.uk/

Agents Note: Whilst every care has been taken to prepare these particulars, they are for guidance purposes only. All measurements are approximate and for general guidance purposes only and whilst every care has been taken to ensure accuracy, they should not be relied upon and potential buyers/tenants are advised to recheck the measurements.